



## ROOM CONTROLLERS FOR 4-PIPE-SYSTEMS, 3-POINT OUTPUT

DB-TA-347

### FUNCTION

3-point valve control on 4-pipe fan coil for room temperature applications with:

- knob adjustment min/comfort/max;
- 2 outputs for each valve (opening and closing);
- proportional band adjustable by jumper;
- fixed dead zone (ZN);
- 3 motor speeds and thermostatic fan/ continuous fan/off manual selection;
- internal or remote temperature sensor (optional);
- setting of the system response time;
- setting of valve stroke time (selectable by jumper): 60, 90, 120 or 180 s.

TYPE	VT/VC/OFF	3-SPEED	LOCAL S/W
DB-TA-347-439	•	•	zn

zn dead zone

**Note:** The controllers are supplied with water sensor model: NTA020-027P.

#### On request:

optional remote 2 m cable sensor, selectable by jumper; ordering code: NT0220-NTC10-02.

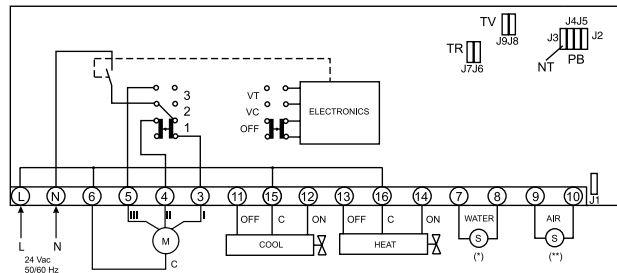
### TECHNICAL FEATURES

- Power supply:** 24 Vac  $\pm$  10%, 50/60 Hz
- Outputs:** 5 triac 24 Vac  
valves: max 0.5 A, min 0.025 A  
speed: max 1 A, min 0.040 A
- Power cons.:** 1 W
- Sensor:** NTC 10K
- Setpoint:** summer:  $+24 \pm 5$  °C  
winter:  $+20 \pm 5$  °C  
mechanical limitation of the setpoint adjustment
- Prop. band:** 1...10 K
- Dead zone:** 4 K
- Working:** 0...+40 °C  
10...90% r.h. (without condensing)
- Storage:** -20...+70 °C  
< 95 % r.h.
- Housing:** ABS fireproof according to UL94 V-0 color (RAL 9010)
- Protection:** IP30, class II
- Size:** 144 x 82 x 34 mm
- Weight:** 210 g

### WIRING DIAGRAM

Terminal connections for air conditioning and heating 4-pipe systems.

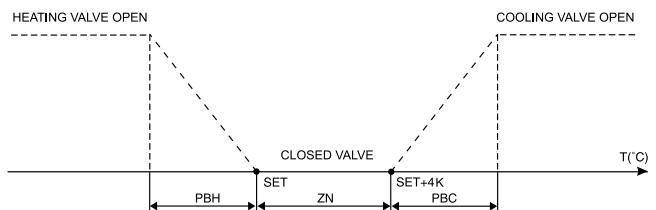
N.B. to connect loads with 230 Vac use auxiliary relays



(\*) water sensor as minimum temperature thermostat with minimal threshold at 30 °C (optional)

(\*\*) remote sensor (optional)

### LOGIC OF OUTPUTS



**Jumper setting:**

- TV = opening valve time
- TR = response time of the unit
- PB = proportional band
- NT = do not modify
- J1 open = remote sensor
- J1 closed = internal sensor

The products are factory supplied with TV = 60 s, TR = 1 min e 30 s, BP = 4 °C and internal sensor.

J7	J6	TR s
0	0	90
0	1	120
1	0	150
1	1	180

J9	J8	TV s
0	0	60
0	1	90
1	0	120
1	1	180

J4	J5	J2	BP °C
0	0	0	1
0	0	1	2
0	1	0	3
0	1	1	4
1	0	0	5
1	0	1	6
1	1	0	7
1	1	1	8

